

Bankhead Theater

TECHNICAL SPECIFICATIONS

2400 First Street, Livermore, California 94550

Main Phone:

925-373-6100

The Performing Arts Center's **500-seat** Bankhead Theater, which opened on October 1, 2007, serves as the home for nine of the area's finest performing arts organizations. In addition, the theater presents artists from across the United States and around the world.

The Bankhead Theater is located approximately 35 miles south-east of Oakland, 34 miles north-east of San Jose, and 90 miles south-west of Sacramento; from I-580 take the North Livermore exit south towards Downtown Livermore. We are located between First Street, Railroad Avenue and South Livermore Avenue; at the Livermore Valley Center in Downtown Livermore.

At-a-Glance

- 500 Seats
- Sound Booth and FOH Mix Area
- New L'Acoustics Sound Systems Installed 2022
- Orchestra Pit
- Orchestra Shells
- Loading Dock / Bus Parking
- Staging Area
- Modern Greenroom with Kitchenette
- 2 Stage Level Dressing Rooms
- 2 Orchestra Rooms
- Outdoor Reception Area
- Downtown Livermore Location



Stage Specifications

Stage Floor

Painted Black Masonite; 1/4" Duron on 2 layers 3/4" plywood; on 2" x 4" sleepers 24" off-center; on Mason SW waffle pads 4" x 4" x 3/4" spaced 24" off center.

Stage Dimensions

- A. **Proscenium Line to Back Wall**
41'-6" (39'-4" to I-Beams)
- B. **Apron Edge to Back Wall** 46'-7"
- C. **Thrust to Back Wall** 56'-8"
- D. **Thrust Dimension (Curved)**
54'-4" Wide x 10'-1" Deep (center stage); 4'-1" (offstage)
Note: The Thrust has two fixed positions: Stage Level and Pit Level. Pit Cover is moved manually.
- E. **Stage Width from SR Wall to Locking Rail 78'-4"**
- F. **Proscenium Opening**
48'-3" Wide x 19'-11" Tall
- G. **Curtain Line to Apron** 6'-1"
- H. **Curtain Line to DS Thrust Edge** ___ 16'-2"
- I. **Curtain Line to Back Wall** 40'-6"
- J. **Prosc. Dist. to Last Lineset** 35'-6"
- K. **Stage Right Wing** 17'-8"
- L. **Stage Left Wing** 12'-5"
- M. **Center Line to Stage Rt Wall** 42'-0"
- N. **Center Line to Stage Left Rail** 37'-0"
- O. **Height from Stage Floor to Grid** ___ 49'-3"
- P. **House Floor to Stage** 3'-0"
- Q. **Orchestra Pit Dimensions**
12'-9" Deep (at center) 5'-2" (at SL/SR)
x54'-3" Wide
- R. **Stage Floor to Pit Floor** 8'-10"
- S. **Stage Floor to Pit Deck** 7'-5"

FOH Throw Distances

Catwalk Dimensions Measured from Light Pipe

Catwalk 1

- A. **To Curtain Line – Horizontal** 16'-3"
- B. **To Stage Floor – Vertical** 31'-1"
- C. **To Curtain Line – Throw** 35'-2"

Catwalk 2

- A. **To Curtain Line – Horizontal** 30'-9"
- B. **To Curtain Line – Throw** 43'-3"
- C. **To Stage Floor – Vertical** 31'-1"

Control Booth (Measured from Window)

- A. **To Thrust Lip** 58'-9"
- B. **To Proscenium** 69'-11"
- C. **To Projection Screen** 76'-6"
- D. **To Cyc** 107'-9"

Company Switch/Auxiliary Power

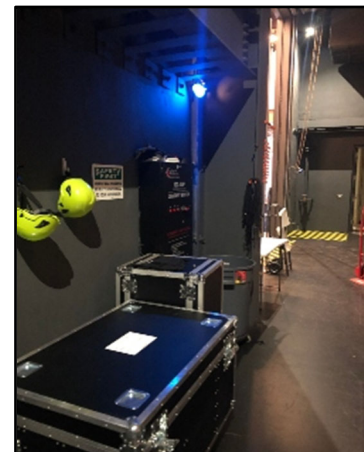
Located at stage right wall.

400 amp

3-phase Camlock (G/N turn-around required)

100 amp

3-phase Camlock (G/N turn-around required)



Stage & Musical Equipment

Marley Dance Floor

6 Rolls
 1 Roll: (6'-6" Deep x 48'-0" Wide)
 5 Rolls: (6'-6" Deep x 52'-0" Wide) Harlequin Reversible (Black/Gray)

Music Stands 60
 Wenger Music Stand

Music Stand Lights 60
 Wenger 40W Clip Light

Wenger Musician Chairs 71

Stage Risers 8
 4' x 8' Wenger Versalite
 Interchangeable legs available: 8", 16", and telescoping 24" - 32"

Conductor Podium 1
 Two-step; Wenger Overview

Lecterns 2
 (1) 42" Da-Lite Lexington Presentation Lectern
 (1) Da-Lite Euro Deluxe Lectern

Video Equipment

Video Projector
 Optoma ZU1050
 10,000 lumens

Projection Screen
Motorized Front Projection Screen.
 20'-0" Wide x 20'-0" (variable height).
 Located on lineset #5

Projection Screen
 1 - Motorized Front Projection Screen;
 20'-0" Wide x 20'-0" (variable height).
 Located on lineset #5

Full stage screen
 1 - 60' x 40'
 Located on lineset # 6
 Also can project onto cycle on lineset # 38

Tables and Chairs and Merchandise Services

We have tables for Merchandise and BOH setup requirements.
 4' and 6'. folding and decorative wood on wheels.

Chairs: Decorative wood/metal, padded and stage stool.

We do not offer a Square or Credit Card Service for merchandise.

All FOH / Event table requirements must be coordinated through Administrative Team.

Musical Equipment

Drum Inventory -Yamaha Recording Kit

1-22" Kick
 1-14"x7.5" snare
 1-12" rack
 1-13" rack
 1-14" x 14" floor tom
 1-16" x 16" floor tom
 1- Yamaha Hi hat stand
 1 DW chain drive Kick pedal
 3- Yamaha straight/boom cymbal stands

***We do not have cymbals. Available for rental.**

Grand Piano
 Steinway & Sons,
 Model D, 9 ft

Stored in Piano garage.



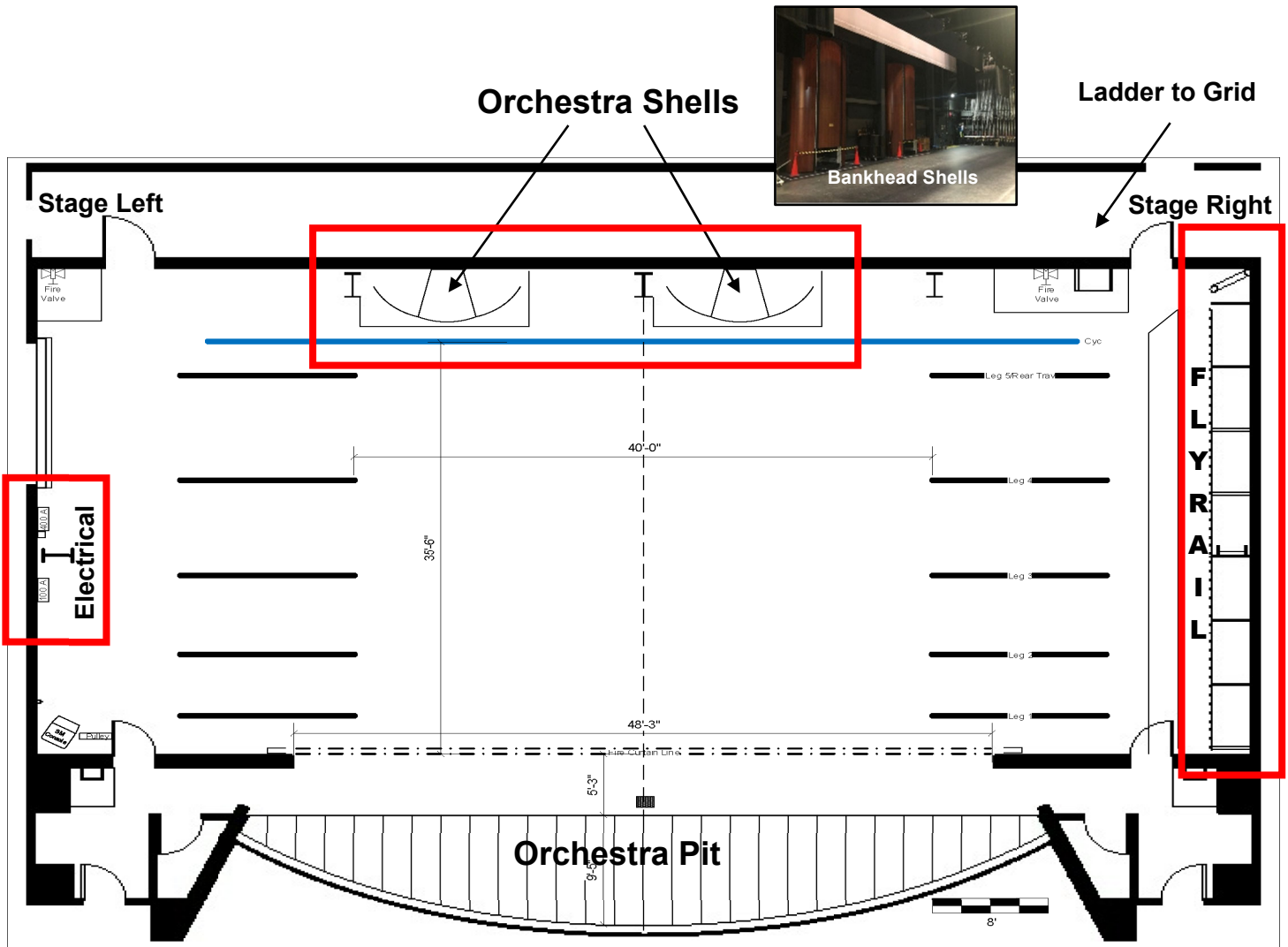
Upright Piano
 Yamaha U1
 4'Hx5'Wx2'D

Located in Green Room



Orchestra Shells
 3-wall sections with
 2-ceiling sections;
 Wenger
 Diva Series (8)

Stage Floor Plan



Drapery

Main Drape..... 1 Henna; 25oz Overture Velour with Denim Lining; Guillotine or Travels (Center Split)

Borders..... 5 Sets 10'-0" tall x 96'-0" wide; Black; 21oz Concertino

Legs..... 5 Sets 10 Legs; 22'-0" tall x 14'-0" wide; Black; 25oz Overture Velour

Mid Stage Black Traveler..... 1
2 Panels Black Velour; 24'-0" Tall x 33'-0" Wide (64' wide total); Dedicated on Two-Way Track Serves as Leg #3 when open

Rear Black Traveler..... 1
2 Panels Black Velour; 33'-0" Tall x 33'-0" Wide (64' Wide total); Dedicated on Two-Way Track

Black Scrim..... 1 Black Sharks tooth, 27'-0" Tall x 60'-0" Wide

White Scrim..... 1 White Scrim, 27'-0" Tall x 60'-0" Wide

White Cyclorama..... 1 Gray Leno, 27'-0" Tall x 60'-0" Wide

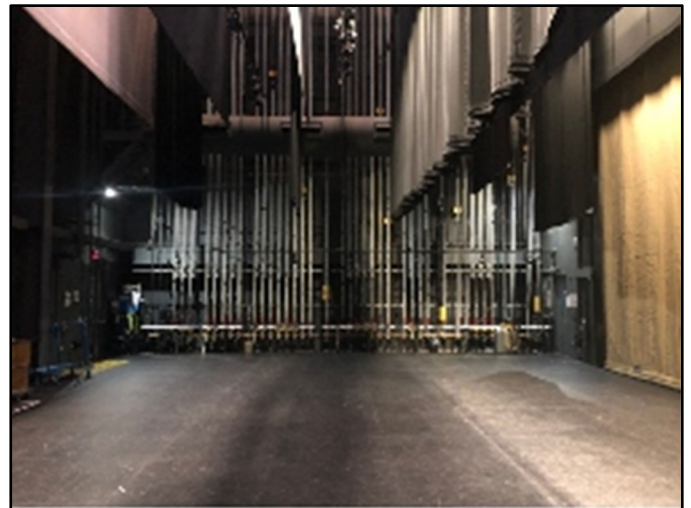
Lineset Schedule

<u>Number</u>	<u>Description</u>	<u>Distance</u>	<u>Difference</u>	<u>Note</u>
1	Main Drape	1' - 0"	12"	Dedicated
2	Border # 1	1' - 9"	9"	
3	Leg # 1	3' - 3"	18"	
4	Electric # 1	4' - 0"	9"	Dedicated
5	Projection Screen	5' - 6"	18"	Dedicated
6	Pipe	6' - 3"	9"	
7	Pipe	7' - 0"	9"	
8	Border # 2	7' - 9"	9"	
9	Leg # 2	8' - 6"	9"	
10	Orchestra Ceiling 1	10' - 0"	18"	Dedicated
11	Electric # 2	11' - 6"	18"	
12	Pipe (Spacer for Electric)	12' - 3"	9"	
13	Pipe	13' - 0"	9"	
14	Border # 3	13' - 9"	9"	
15	Mid Traveler / Leg # 3	15' - 3"	18"	Dedicated
16	Pipe	16' - 0"	9"	
17	Pipe	16' - 9"	9"	
18	Pipe	17' - 6"	9"	
19	Pipe	18' - 3"	9"	
20	Pipe (Spacer for Electric)	19' - 0"	9"	
21	Electric # 3	19' - 9"	9"	
22	Orchestra Ceiling 2	21' - 3"	18"	Dedicated
23	Border # 4	22' - 9"	18"	
24	Leg # 4	23' - 6"	9"	
25	Pipe	24' - 3"	9"	
26	Pipe	25' - 0"	9"	
27	Pipe	25' - 9"	9"	
28	Pipe	26' - 6"	9"	
29	Pipe	27' - 3"	9"	
30	Pipe	28' - 0"	9"	
31	Border # 5	29' - 6"	18"	
32	Pipe (Spacer for Electric)	30' - 3"	9"	
33	Cyc Electric	31' - 0"	9"	
34	Pipe (Spacer for Electric)	31' - 9"	9"	
35	Rear Traveler	32' - 6"	9"	
36	Pipe	34' - 0"	18"	
37	Pipe	34' - 9"	9"	
38	Cyclorama	35' - 6"	9"	

Counterweight System

Located Stage Left Single Purchase Operated from Deck Under-hung counterweight rigging system; manually operated; Electric 1 motorized Single-pipe general purpose battens, double-pipe dedicated first electric batten and dedicated orchestra ceilings.

Typical Batten is 64' - 0" Long, 1-1/2" nom. Schedule 40 painted steel pipe with 7 lift lines, 8" diameter loft blocks, 6 feet telescoping extensions each end, approximately 1000 lbs. live load capacity. Distance is from centerline of batten to face of proscenium wall. Difference is center/center distance. Dedicated battens do not move / re-hang.



Stage Left – Fly Rail

Sound System

Mains

Left & Right 2022 Install

L 'Acoustics A10i 2 focus 2 wide per side

Center Meyer UPA-1P (1 at center)

Front Fill Meyer MM-4 (10 installed at edge of stage)

Subwoofer 2022 Install

L 'Acoustics SB18 2 per side

Processing 2022 Install

L 'Acoustics LA Network Manager

Sound Board FOH Yamaha CL-5 Dante

Can be located in control room with sliding glass or in center of the orchestra, back row. IPAD Remote.

MON Yamaha M7CL or Behringer X32.

Monitors must be mixed Stage Right.

Booth Monitors

(2) Genelec 8020A

Remote Mic Pre's(2) Rio 3224 – D2 (1) FOH,

(1) MON

Inputs from the 32ch racks are patched via Dante

Monitors

8 Mixes – L-Acoustic

12 - L-Acoustic 12xt

(12" Woofer / Coaxial Bi Amped)

4 – LA4 Amplifiers

2 – Meyer CQ-1 Used as Side Fill Speakers

2 – Meyer 600HP Used as Side Fill Subs

2 – JBL Eon 15" Woofer

6 – Yamaha DXR12 / 1- 12" Woofer 1" Horn-loaded diaphragm

Yamaha DXS15 - 15" Sub

Playback

- Denon DN-T625 CD/Cassette Player
- Tascam CD-RW901 CD Player/Recorder

Assisted Listening

- Listen LT800-072 Assistive Listening System
- Listen LR-300-72 ALC Receivers
- LA-166 "T" coil Neck Loop attachments available.

Microphones

12	Shure ULXD Wireless Handheld and Belt Packs
10	Shure SM-58
12	Shure SM-57
6	Shure Beta 57
5	Shure Beta 87
8	Shure Beta 98 w/horn clip
4	Shure Beta 98
1	Shure Beta 91
2	Shure KSM-109
2	Shure SM-81
4	Crown PCC-160
1	EV RE-20
2	Sennheiser MD-421
2	Audix D-6
4	Audix D-2
2	Audix D-4
2	Audix I-5
6	Audix SCX One
2	AKG 414
8	Countryman Type 85 Mono Active DI
2	Countryman Type 85 Stereo Active DI
1	Whirlwind Imp Passive DI
2	Whirlwind PCDI
1	Helpenstill Piano Pickup
4	Replacement Heads KSM-8
4	Replacement Heads Beta 87A

Clear Com

- RCS-2000 Intercom
- MS-440 4ch Stage Manager Station
- RS-601 & 701 Single Chanel Belt Pack
- RS-602 & 702Dual Chanel Belt Pack

Wireless Intercom

- HME DX210 System (4) Belt packs

Sound Pressure Levels

Management requires that sound pressure be kept within safe levels for both our audience and crew. If the peak sound pressure levels at the closest audience or crew member exceed 95 dB (A-Weighted) or 100 dB (C-Weighted), the audio engineer could be asked to lower the volume at the discretion of the Production Manager.

Lighting System

Lighting System Console

ETC Ion 1000 With a 2x20 Fader wing attached.
w/iPad Remote

Dimmers

192 Strand Dimmers @ 2.4k
(10) Dual Relay (Constant Power) Modules

Electrics

House Trim Height 23'

Lighting Instruments

- ETC Source 4 Pars
- WFL, MFL, NSP & VNSP Lenses Available
- ETC Colorsource PARS & Series 2 Lustr LED Instruments

Cyc Lights

7 – ETC Series 2 Lustr LED w/Cyc Adaptors – Overhead
7 – ETC Series 2 Lustr LED w/Cyc Adaptors – Ground Row

Follow spots

2 Strong Radiance Systems 850w
75'-9" Throw distance to curtain line

Circuits (Stage Pin)

See light plot for circuit locations

Lighting Inventory

- Incandescent S4 Leko Bodies: 152
 - 10° barrels: 6
 - 19° barrels: 57
 - 26° barrels: 60
 - 36° barrels: 30
 - 50° barrels: 12
- Incandescent S4 Pars: 71
 - WFL: 37
 - MFL: 15
 - NFL: 17
 - VNFL: 0

Note: Lenses are what is in use, we have enough of each type of lens to put as many as needed in our existing S4 Par stock

Miscellaneous

- Pattern Holders, Two-Fers, (24) Side Arms
- All Connectors are Stage Pin 20A/120v
- 12' Pipe and Base (8)

Lighting Inventory (Continued)

- **LED ColorSource Pars: 15**
 - Wide Oval Diffuser: 15
 - Wide Round Diffuser: 1
 - Medium Oval Diffuser: 14
 - Medium Round Diffuser: 17
 - Narrow Oval Diffuser: 15
 - Narrow Round Diffuser: 1
 - Very Narrow Round: 1
 - Linear Diffusers: 1 of each lens size VN-Extra Wide
- **Top Hats/Barn Doors:**
 - 10° top hats: 6
 - S4 top hats: 24
 - Barn Doors: 27
- **Cables:**
 - 5-10' 3-Pin: 18
 - 15' 3-Pin: 21
 - 25' 3-Pin: 19
 - 50' 3-Pin: 11
 - 100' 3-Pin: approx. 4
 - 10' Pwrcon/DMX: 31
 - 25' Pwrcon/DMX: 2
 - 2-fers: 49
 - 100' DMX: 6
 - 10' DMX: 2
 - 25' DMX: 6
 - 50' DMS: 3
 - 100' SOCO Cable: 11
 - Male SOCO Squids: 7
 - Female SOCO Squids: 6
 - Male Edison to Female 3-Pin: 5
 - Female Edison to Male 3-Pin: 5
- **Gel/Gobo/Iris:**
 - Leko Gel Frames: 135
 - Par Gel Frames: 53
 - 10° Gel Frames: 6
 - Size B Gobo Holders: 31
 - Size A Gobo Holders: 22
 - Size B Glass Gobo: 2
 - Irises: 2
 - S4 Donuts: 10
 - LED S4 Leko diffusers: 14
- **Misc./Other:**
 - Par Ground Bases: 12
 - S4 Leko Ground Bases: 15
 - C-Clamps (extra): 30
 - Arms: 21
 - ETC Ethernet Nodes: 8
 - LED S4 Leko Diffusers (with frame): 26

LVPAC Instrument Schedule

Position	Unit #	Inst Type	Wattage	Color	Channel	Dimmer
1st Electric	1	ETC Source4 36deg	575W	R26	162	81
1st Electric	2	ETC Source4 36deg	575W	R26	162	82
1st Electric	3	ETC Source4 26deg	575W	R26	162	83
1st Electric	4	ETC Source4 26deg	575W	R26	162	84
1st Electric	5	ETC Source4 PAR WFL	575W	N/C	120	85
1st Electric	6	ETC ColorSource PAR Wide	90W		115	
1st Electric	7	ETC Source4 26deg	575W	N/C	103	87
1st Electric	8	ETC Source4 PAR WFL	575W	N/C	119	88
1st Electric	9	ETC ColorSource PAR Wide	90W		114	
1st Electric	10	ETC Source4 PAR WFL	575W	N/C	118	90
1st Electric	11	ETC Source4 26deg	575W	N/C	102	91
1st Electric	12	ETC ColorSource PAR Wide	90W		113	
1st Electric	13	ETC Source4 PAR WFL	575W	N/C	117	93
1st Electric	14	ETC ColorSource PAR Wide	90W		112	
1st Electric	15	ETC Source4 26deg	575W	N/C	101	95
1st Electric	16	ETC Source4 PAR WFL	575W	N/C	116	96
1st Electric	17	ETC ColorSource PAR Wide	90W		111	
1st Electric	18	ETC Source4 26deg	575W	R26	161	97
1st Electric	19	ETC Source4 26deg	575W	R26	161	98
1st Electric	20	ETC Source4 36deg	575W	R26	161	99
1st Electric	21	ETC Source4 36deg	575W	R26	161	100
2nd Electric	1	ETC Source4 36deg	575W	R26	172	103
2nd Electric	2	ETC Source4 36deg	575W	R26	172	104
2nd Electric	3	ETC Source4 26deg	575W	R26	172	105
2nd Electric	4	ETC Source4 26deg	575W	R26	172	106
2nd Electric	5	ETC Source4 PAR WFL	575W	N/C	130	107
2nd Electric	6	ETC ColorSource PAR Wide	90W		125	
2nd Electric	7	ETC Source4 26deg	575W	N/C	106	108
2nd Electric	8	ETC Source4 PAR WFL	575W	N/C	129	109
2nd Electric	9	ETC ColorSource PAR Wide	90W		124	
2nd Electric	10	ETC Source4 PAR WFL	575W	N/C	128	110
2nd Electric	11	ETC Source4 26deg	575W	N/C	105	111
2nd Electric	12	ETC ColorSource PAR Wide	90W		123	
2nd Electric	13	ETC Source4 PAR WFL	575W	N/C	127	112
2nd Electric	14	ETC ColorSource PAR Wide	90W		122	
2nd Electric	15	ETC Source4 26deg	575W	N/C	104	113
2nd Electric	16	ETC Source4 PAR WFL	575W	N/C	126	114
2nd Electric	17	ETC ColorSource PAR Wide	90W		121	
2nd Electric	18	ETC Source4 26deg	575W	R26	171	139
2nd Electric	19	ETC Source4 26deg	575W	R26	171	140
2nd Electric	20	ETC Source4 36deg	575W	R26	171	141
2nd Electric	21	ETC Source4 36deg	575W	R26	171	142
3rd Electric	1	ETC Source4 36deg	575W	R26	182	115
3rd Electric	2	ETC Source4 36deg	575W	R26	182	116
3rd Electric	3	ETC Source4 26deg	575W	R26	182	117
3rd Electric	4	ETC Source4 26deg	575W	R26	182	118
3rd Electric	5	ETC Source4 PAR WFL	575W	N/C	140	119
3rd Electric	6	ETC ColorSource PAR Wide	90W		135	
3rd Electric	7	ETC Source4 26deg	575W	N/C	109	120
3rd Electric	8	ETC Source4 PAR WFL	575W	N/C	139	121
3rd Electric	9	ETC ColorSource PAR Wide	90W		134	
3rd Electric	10	ETC Source4 PAR WFL	575W	N/C	138	122
3rd Electric	11	ETC Source4 26deg	575W	N/C	108	123
3rd Electric	12	ETC ColorSource PAR Wide	90W		133	
3rd Electric	13	ETC Source4 PAR WFL	575W	N/C	137	124
3rd Electric	14	ETC ColorSource PAR Wide	90W		132	
3rd Electric	15	ETC Source4 26deg	575W	N/C	107	125

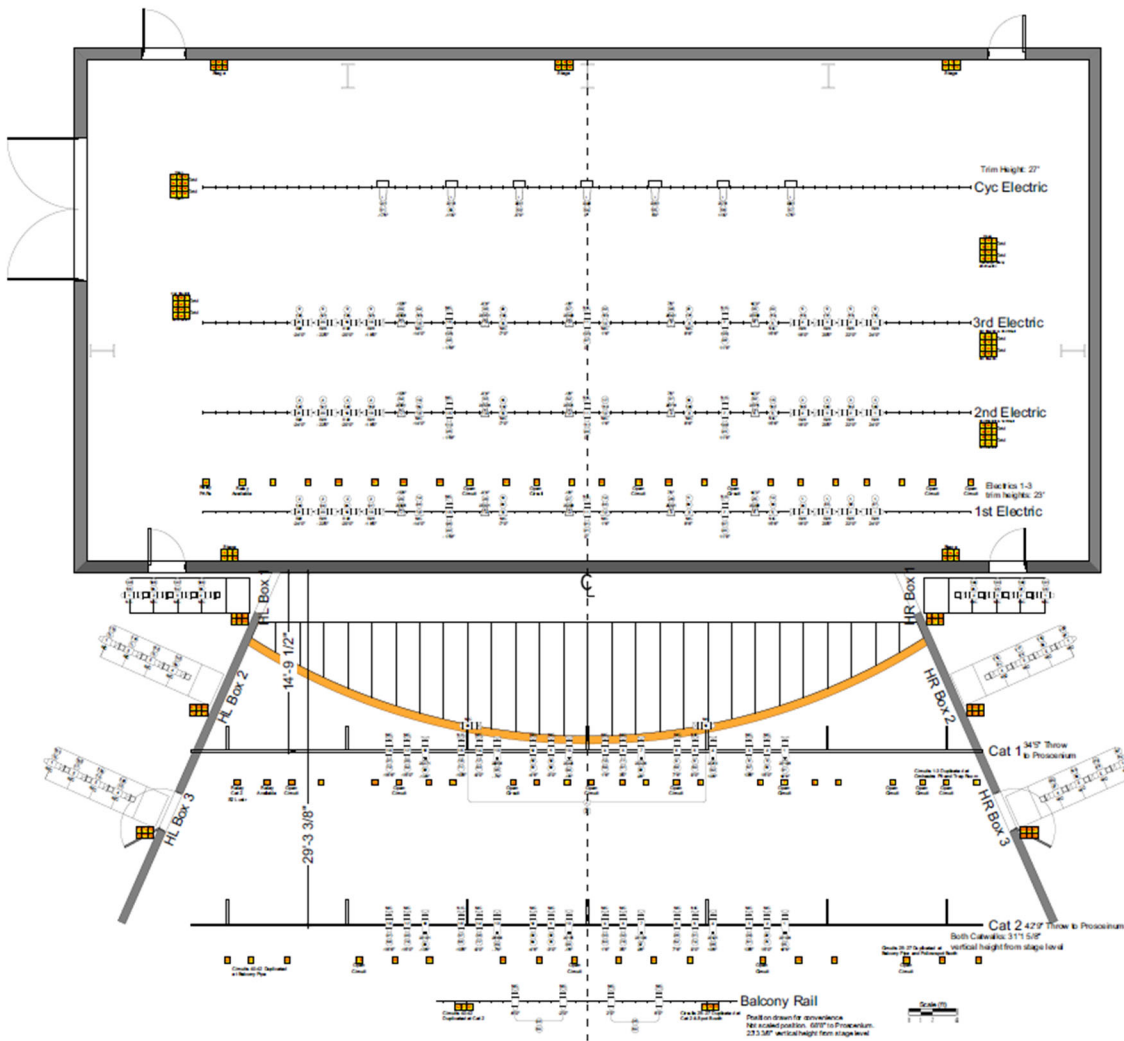
Instrument Schedule continued page 2

Position	Unit #	Inst Type	Wattage	Color	Channel	Dimmer
3rd Electric	16	ETC Source4 PAR WFL	575W	N/C	136	126
3rd Electric	17	ETC ColorSource PAR Wide	90W		131	
3rd Electric	18	ETC Source4 26deg	575W	R26	181	145
3rd Electric	19	ETC Source4 26deg	575W	R26	181	146
3rd Electric	20	ETC Source4 36deg	575W	R26	181	147
3rd Electric	21	ETC Source4 36deg	575W	R26	181	148
4th Electric		ETC Source4 PAR WFL	575W		141	137
4th Electric		ETC Source4 PAR WFL	575W		141	138
4th Electric		ETC Source4 PAR WFL	575W		141	136
4th Electric		ETC Source4 PAR WFL	575W		141	133
4th Electric		ETC Source4 PAR WFL	575W		141	134
4th Electric		ETC Source4 PAR WFL	575W		141	135
Balcony Rail		ETC Source4 19deg	575W	N/C	99	25
Balcony Rail		ETC Source4 19deg	575W	N/C	99	42
Balcony Rail		ETC Source4 19deg	575W	N/C	99	42
Balcony Rail		ETC Source4 19deg	575W	N/C	99	25
Cat 1	1	ETC Source4 LED2LS 19deg	171W		6	
Cat 1	2	ETC Source4 19deg	575W	N/C	46	5
Cat 1	3	ETC Source4 19deg	575W	N/C	26	6
Cat 1	4	ETC Source4 LED2LS 19deg	171W		5	
Cat 1	5	ETC Source4 19deg	575W	N/C	45	8
Cat 1	6	ETC Source4 19deg	575W	N/C	25	9
Cat 1	7	ETC Source4 LED2LS 19deg	171W		4	
Cat 1	8	ETC Source4 19deg	575W	N/C	44	11
Cat 1	9	ETC Source4 19deg	575W	N/C	24	12
Cat 1	10	ETC Source4 LED2LS 19deg	171W		3	
Cat 1	11	ETC Source4 19deg	575W	N/C	43	14
Cat 1	12	ETC Source4 19deg	575W	N/C	23	15
Cat 1	13	ETC Source4 LED2LS 19deg	171W		2	
Cat 1	14	ETC Source4 19deg	575W	N/C	42	17
Cat 1	15	ETC Source4 19deg	575W	N/C	22	18
Cat 1	16	ETC Source4 LED2LS 19deg	171W		1	
Cat 1	17	ETC Source4 19deg	575W	N/C	41	20
Cat 1	18	ETC Source4 19deg	575W	N/C	21	21
Cat 1	19	ETC Source4 19deg	575W	N/C	100	1
Cat 1	20	ETC Source4 19deg	575W	N/C	100	1
Cat 2	1	ETC Source4 LED2LS 19deg	171W		12	
Cat 2	2	ETC Source4 19deg	575W	N/C	52	28
Cat 2	3	ETC Source4 19deg	575W	N/C	32	29
Cat 2	4	ETC Source4 LED2LS 19deg	171W		11	
Cat 2	5	ETC Source4 19deg	575W	N/C	51	31
Cat 2	6	ETC Source4 19deg	575W	N/C	31	26
Cat 2	7	ETC Source4 LED2LS 19deg	171W		10	
Cat 2	8	ETC Source4 19deg	575W	N/C	50	32
Cat 2	9	ETC Source4 19deg	575W	N/C	30	33
Cat 2	10	ETC Source4 LED2LS 19deg	171W		9	
Cat 2	11	ETC Source4 19deg	575W	N/C	49	35
Cat 2	12	ETC Source4 19deg	575W	N/C	29	36
Cat 2	13	ETC Source4 LED2LS 19deg	171W		8	
Cat 2	14	ETC Source4 19deg	575W	N/C	48	38
Cat 2	15	ETC Source4 19deg	575W	N/C	28	37
Cat 2	16	ETC Source4 LED2LS 19deg	171W		7	
Cat 2	17	ETC Source4 19deg	575W	N/C	47	40
Cat 2	18	ETC Source4 19deg	575W	N/C	27	41
Cyc Electric		ETC Source4 LED2LS Cyclig	171W		151	
Cyc Electric		ETC Source4 LED2LS Cyclig	171W		152	
Cyc Electric		ETC Source4 LED2LS Cyclig	171W		154	

Instrument Schedule continued page 3

Position	Unit #	Inst Type	Wattage	Color	Channel	Dimmer
Cyc Electric		ETC Source4 LED2LS Cyclig	171W		155	
Cyc Electric		ETC Source4 LED2LS Cyclig	171W		153	
Cyc Electric		ETC Source4 LED2LS Cyclig	171W		157	
Cyc Electric		ETC Source4 LED2LS Cyclig	171W		156	
HL Box 1	1	6.25in Top Hat				
HL Box 1	1	6.25in Top Hat				
HL Box 1	1	ETC Source4 26deg	575W	N/C	61	66
HL Box 1	2	6.25in Top Hat				
HL Box 1	2	6.25in Top Hat				
HL Box 1	2	ETC Source4 26deg	575W	N/C	62	65
HL Box 1	3	6.25in Top Hat				
HL Box 1	3	6.25in Top Hat				
HL Box 1	3	ETC Source4 26deg	575W	N/C	63	64
HL Box 1	4	6.25in Top Hat				
HL Box 1	4	6.25in Top Hat				
HL Box 1	4	ETC Source4 26deg	575W	N/C	64	63
HL Box 2	1	6.25in Top Hat				
HL Box 2	1	6.25in Top Hat				
HL Box 2	1	ETC Source4 26deg	575W	N/C	71	72
HL Box 2	2	6.25in Top Hat				
HL Box 2	2	6.25in Top Hat				
HL Box 2	2	ETC Source4 26deg	575W	N/C	72	71
HL Box 2	3	6.25in Top Hat				
HL Box 2	3	6.25in Top Hat				
HL Box 2	3	ETC Source4 26deg	575W	N/C	73	70
HL Box 2	4	6.25in Top Hat				
HL Box 2	4	6.25in Top Hat				
HL Box 2	4	ETC Source4 26deg	575W	N/C	74	69
HL Box 3	1	6.25in Top Hat				
HL Box 3	1	6.25in Top Hat				
HL Box 3	1	ETC Source4 26deg	575W	N/C	81	78
HL Box 3	2	6.25in Top Hat				
HL Box 3	2	6.25in Top Hat				
HL Box 3	2	ETC Source4 26deg	575W	N/C	82	77
HL Box 3	3	6.25in Top Hat				
HL Box 3	3	6.25in Top Hat				
HL Box 3	3	ETC Source4 26deg	575W	N/C	83	76
HL Box 3	4	6.25in Top Hat				
HL Box 3	4	6.25in Top Hat				
HL Box 3	4	ETC Source4 26deg	575W	N/C	84	75
HL Box 3	5	ETC Source 4 10°			89	74
HR Box 1	1	ETC Source4 26deg	575W	N/C	65	48
HR Box 1	2	ETC Source4 26deg	575W	N/C	66	47
HR Box 1	3	ETC Source4 26deg	575W	N/C	67	46
HR Box 1	4	ETC Source4 26deg	575W	N/C	68	45
HR Box 2	1	ETC Source4 26deg	575W	N/C	75	54
HR Box 2	2	ETC Source4 26deg	575W	N/C	76	53
HR Box 2	3	ETC Source4 26deg	575W	N/C	77	52
HR Box 2	4	ETC Source4 26deg	575W	N/C	78	51
HR Box 3	1	ETC Source4 26deg	575W	N/C	85	60
HR Box 3	2	ETC Source4 26deg	575W	N/C	86	59
HR Box 3	3	ETC Source4 26deg	575W	N/C	87	58
HR Box 3	4	ETC Source4 26deg	575W	N/C	88	57
HR Box 3	5	ETC Source4 10deg	575W	N/C	90	55

LVPAC Lighting Plot



Symbol Key

Lighting Symbols & Inventory

□	ETC ColorSource PAR Wide Beam @ 50w	15 / 15
⊞	ETC Source4 LED2.5 194deg @ 171w	12 / 12
⊞	ETC Source4 LED2.5 CycLight @ 171w	7 / 14
⊞	ETC Source4 19deg @ 575w	0 / 6
⊞	ETC Source4 19deg @ 575w	30 / 36
⊞	ETC Source4 29deg @ 575w	45 / 62
⊞	ETC Source4 36deg @ 575w	12 / 24
⊞	ETC Source4 50deg @ 575w	0 / 9
Total		87
Total Source 4 Bodies: 135		
⊞	ETC Source4 PAR NSP @ 575w	0 / 0
⊞	ETC Source4 PAR VNP @ 575w	0 / 0
⊞	ETC Source4 PAR MFL @ 575w	0 / 0
⊞	ETC Source4 PAR WFL @ 575w	15 / 44
Total		15
Total PAR Bodies: 44		

Instrument Legend

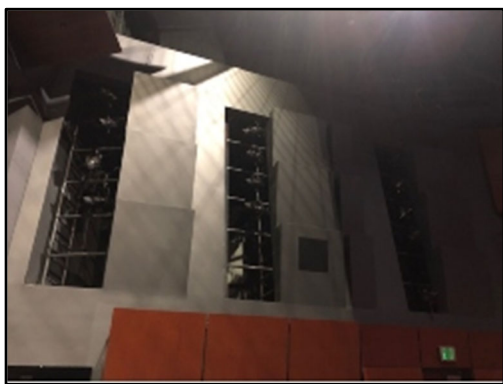
- ⊞ 1/4" dia
- ⊞ 1/2" dia
- ⊞ 3/4" dia
- ⊞ 1" dia

Color Summary

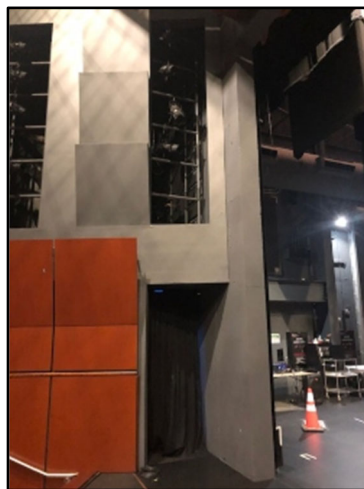
Color	Size	Count
NC	6.25"	55
NC	7.5"	15
RS	6.25"	24

Accessories

⊞	6.25in Top Hat	24 / 24
⊞	7.5in 4 Leaf Bam Door	0 / 38
⊞	19in Top Hat	0 / 11
⊞	1/8"	0 / 2



Stage Left – All Boxes (3)



Stage Right - Box



Stage Right - Apron

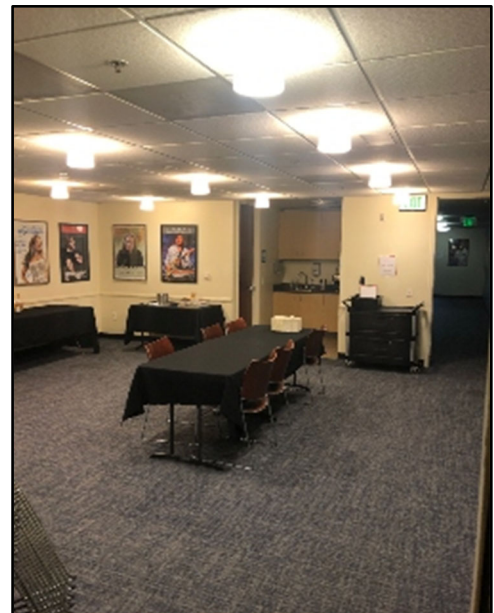
Hospitality - Green Room



Green Room

A Green Room is located off Up Stage Left. Green Room has a single restroom, kitchenette, with refrigerator, wardrobe rack, Upright Piano and tables and chairs.

.....Capacity 25
Approx. 21'-0" x 22'-0"; 462 Sq. Ft



Hospitality / Hotel Coordinator

Pam Harvey

p: 925-997-9830

[Contact Pam Harvey -
Pharvey@LVPAC.org](mailto:Pharvey@LVPAC.org)

Located in Basement

Stage Level Dressing Rooms

Stage Level Dressing Rooms

There are four (4) **Dressing Rooms** located off Stage Left. All rooms have make-up lights, mirrors, chairs, sinks, toilets, and showers.

First Floor Dressing Rooms

Star 1 Capacity 2-4
Approx. 12'-0" x 9'-0"; 108 Sq. Ft

Star 2 Capacity 2-4
Approx. 11'-0" x 8'-0"; 88 Sq. Ft

Second Floor Chorus Rooms

Stairs and Elevator Access

Chorus 1 Capacity 20
Approx. 13'-0" x 29'-0"; 377 Sq. Ft

Chorus 2 Capacity 20
Approx. 13'-0" x 21'-0"; 273 Sq. Ft

Wardrobe / Laundry / Towels / Supplies

A Wardrobe Room is located in the basement, off Stage Left, with stair and elevator access. Towels and laundry/shower supplies available. Contact Hospitality Coordinator directly with requirements if other than on the rider.

- Washer 1
- Dryer 1
- Jiffy Steamer 2
- Iron 1
- Iron Board 1
- Rolling Wardrobe Racks 6

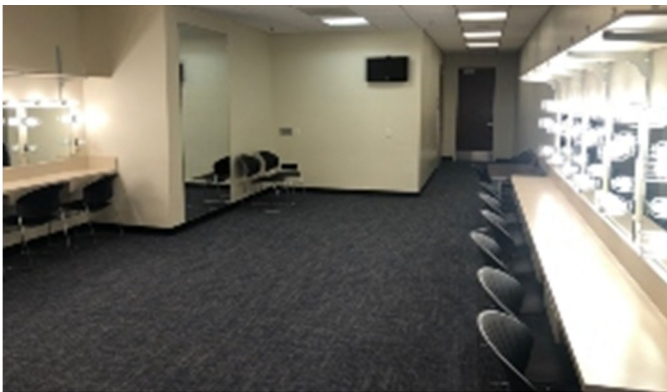


Star 1

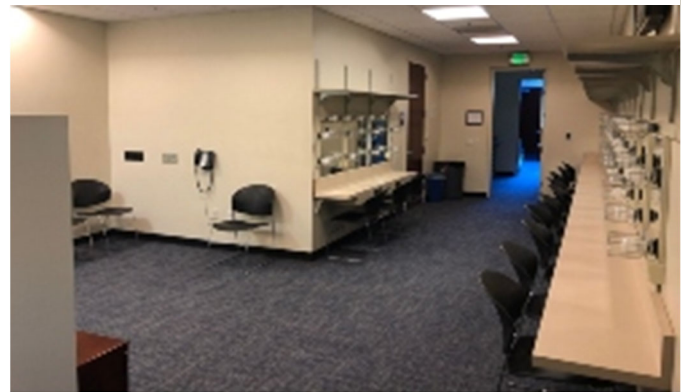


Star 2

2nd Floor Chorus Rooms

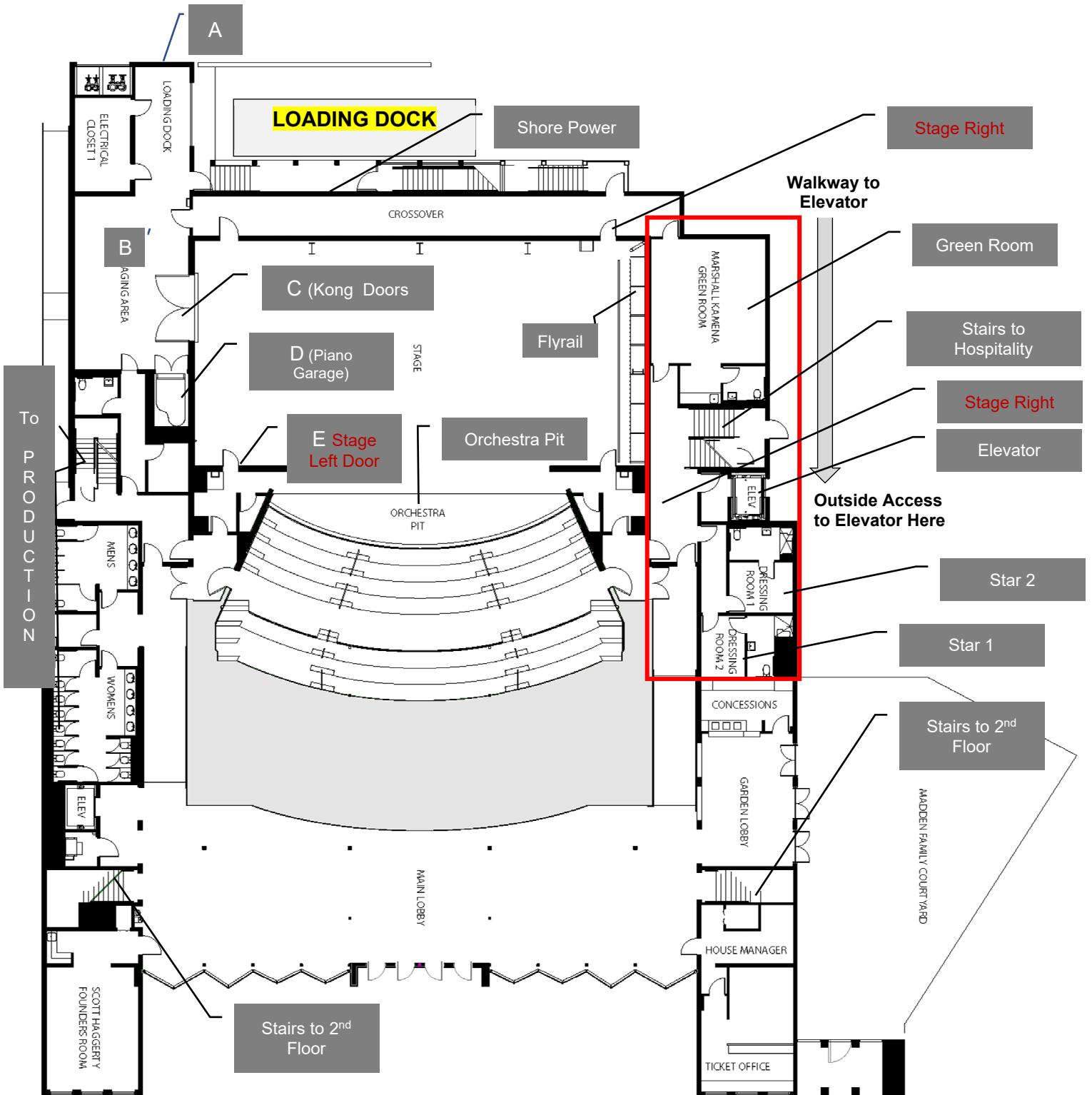


Chorus 1

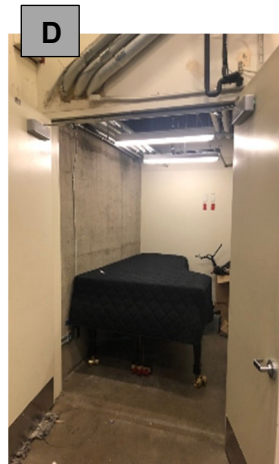
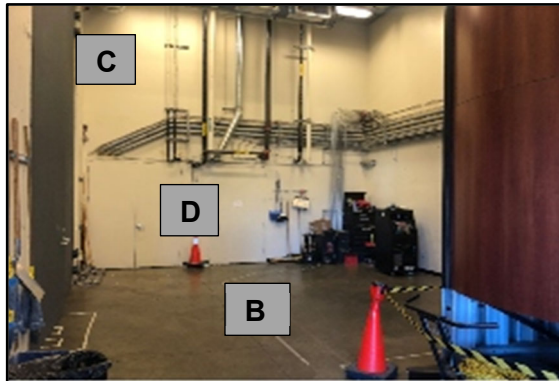


Chorus 2

Back Stage and Theater Floor Plan – Stage Level

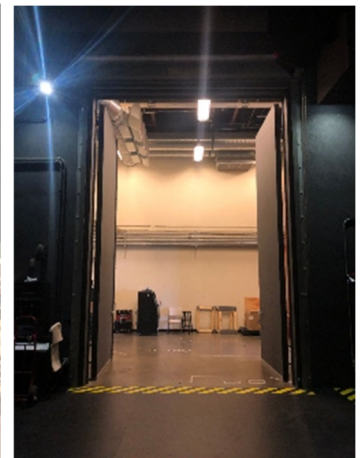


Back Staging Area / View from the Stage



**Piano
Garage**

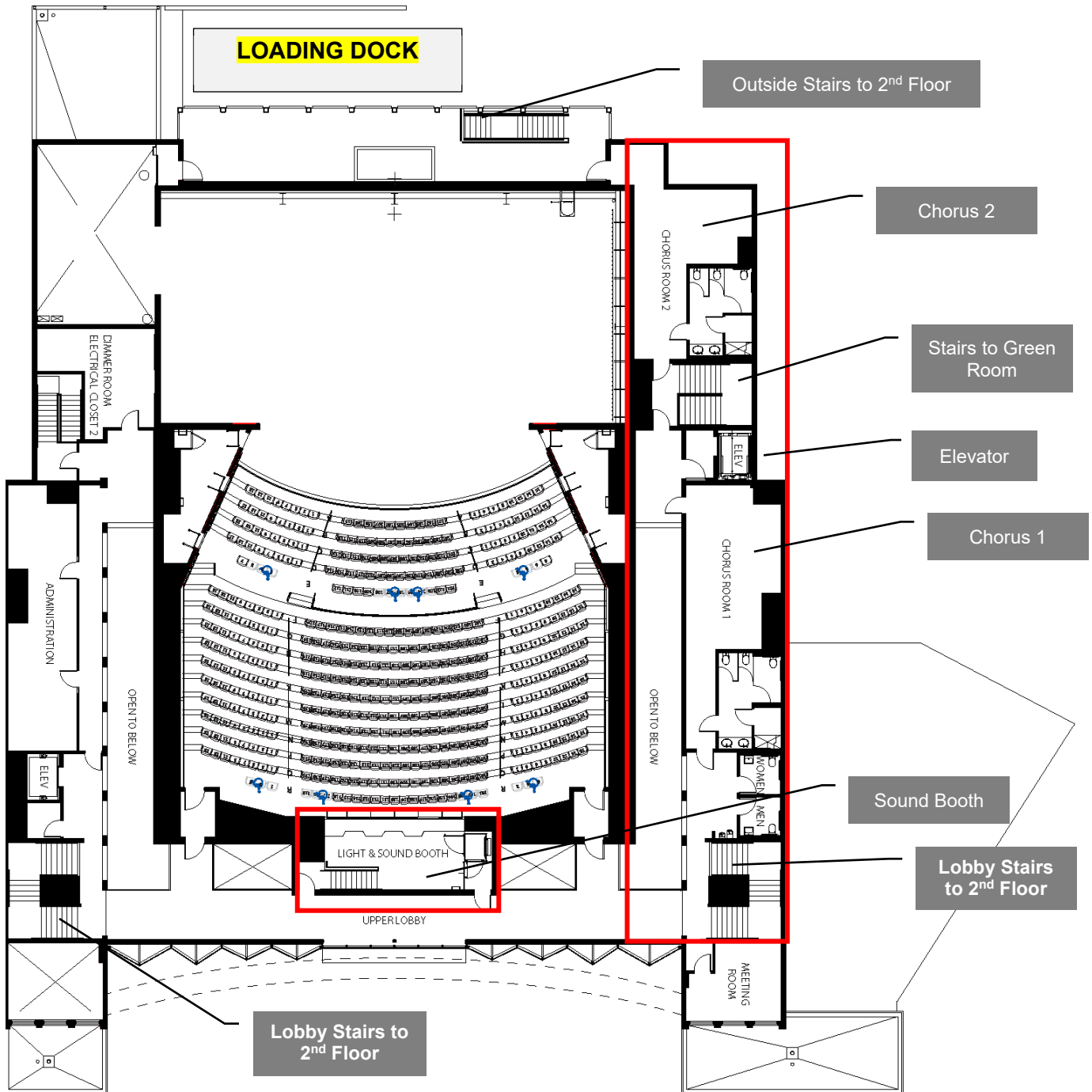
**In Staging
Area [B]**



Stage Right "King Kong" Double Doors
Opening measures 11'-6 3/4" wide x 17'-3 1/2" tall

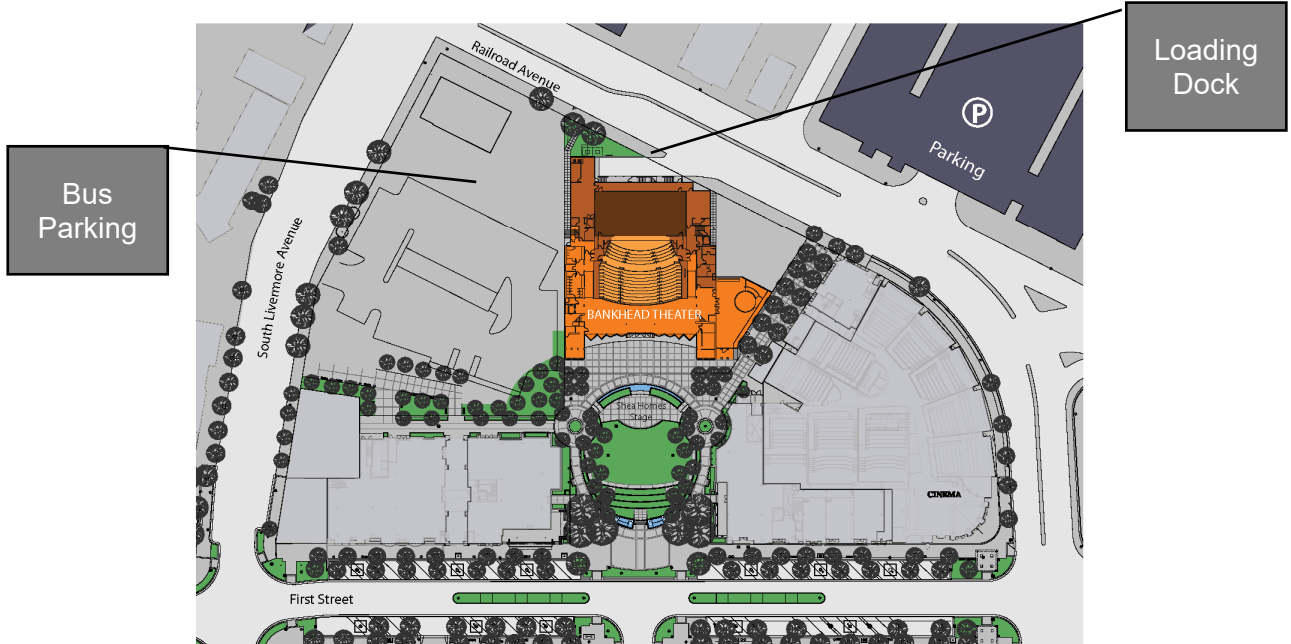
Left – View from Staging Area, **Center and Right** – View from Stage

Theater Floor Plan and Chorus Rooms 2nd Floor



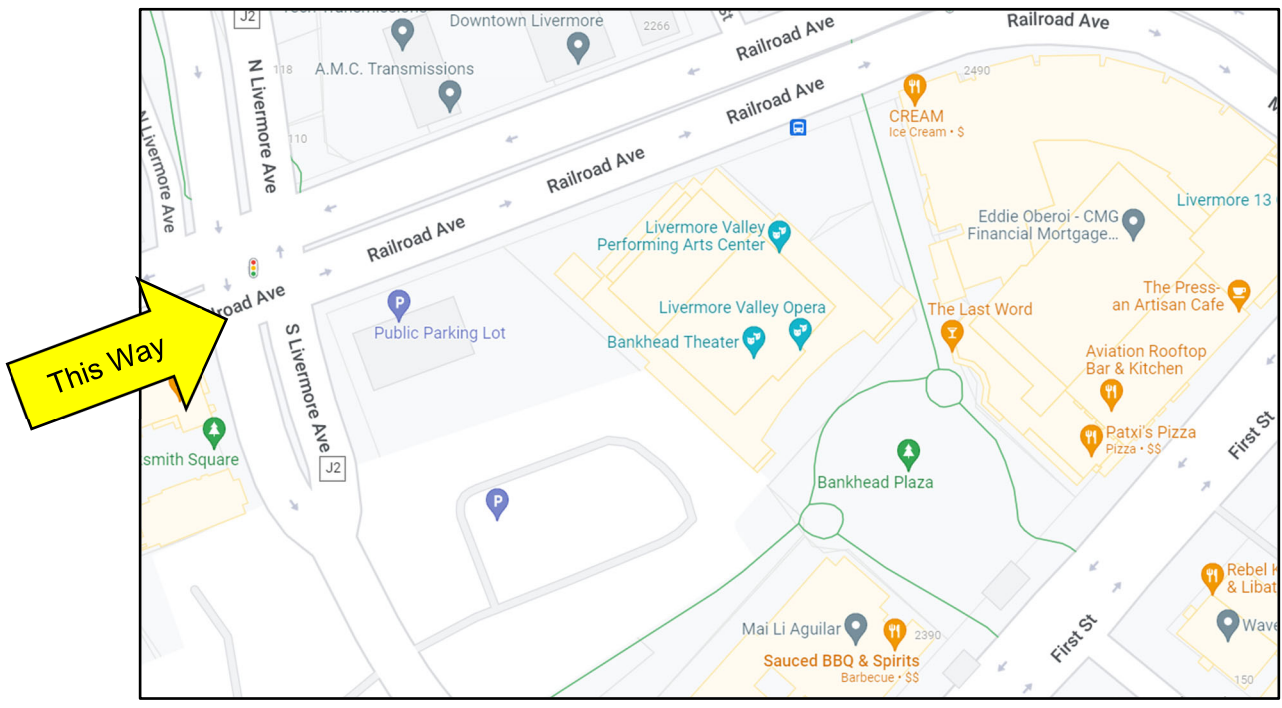
Bankhead Theater Maps

02/12/2004



2400 First Avenue, Livermore CA 94550

[Google Map Link](#)



Loading Dock and Parking

Location Dock is located off Railroad Avenue on the North side of building.

Address to Loading Dock for GPS
2309 Railroad Avenue
Livermore, CA. 94550

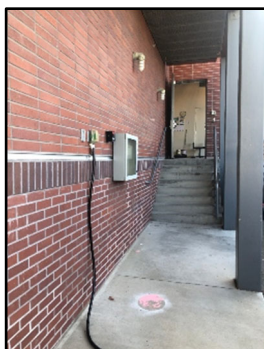
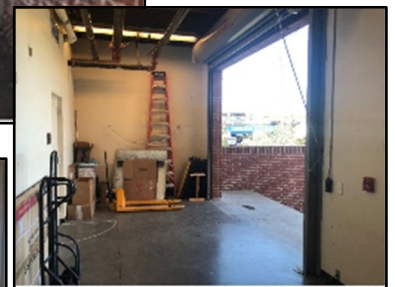


Loading Dock Accommodates
Box Truck, Tractor /Trailer, Tour Bus
(53' Max Length).

Dock Height: 4'-3"

Dock Door (Rolling) Dimensions
12' wide x 9'-11" tall

Distance from Dock to Stage 25'

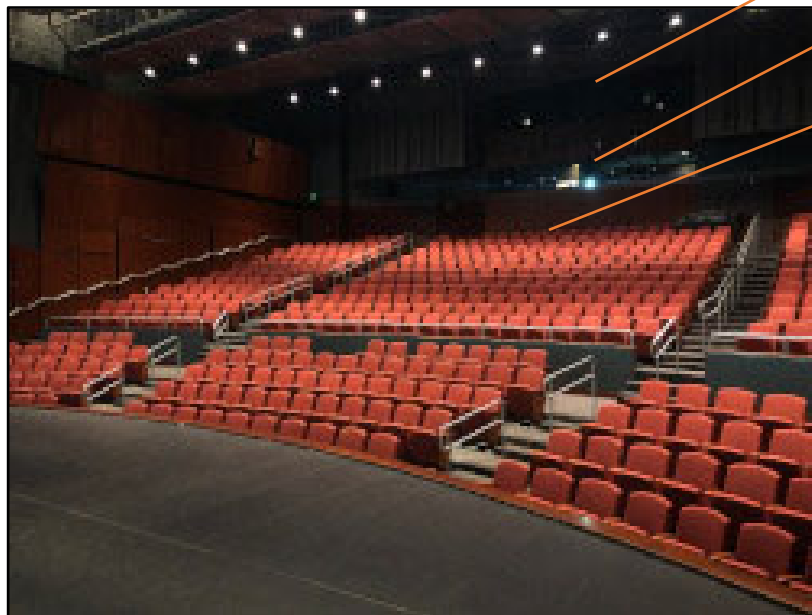
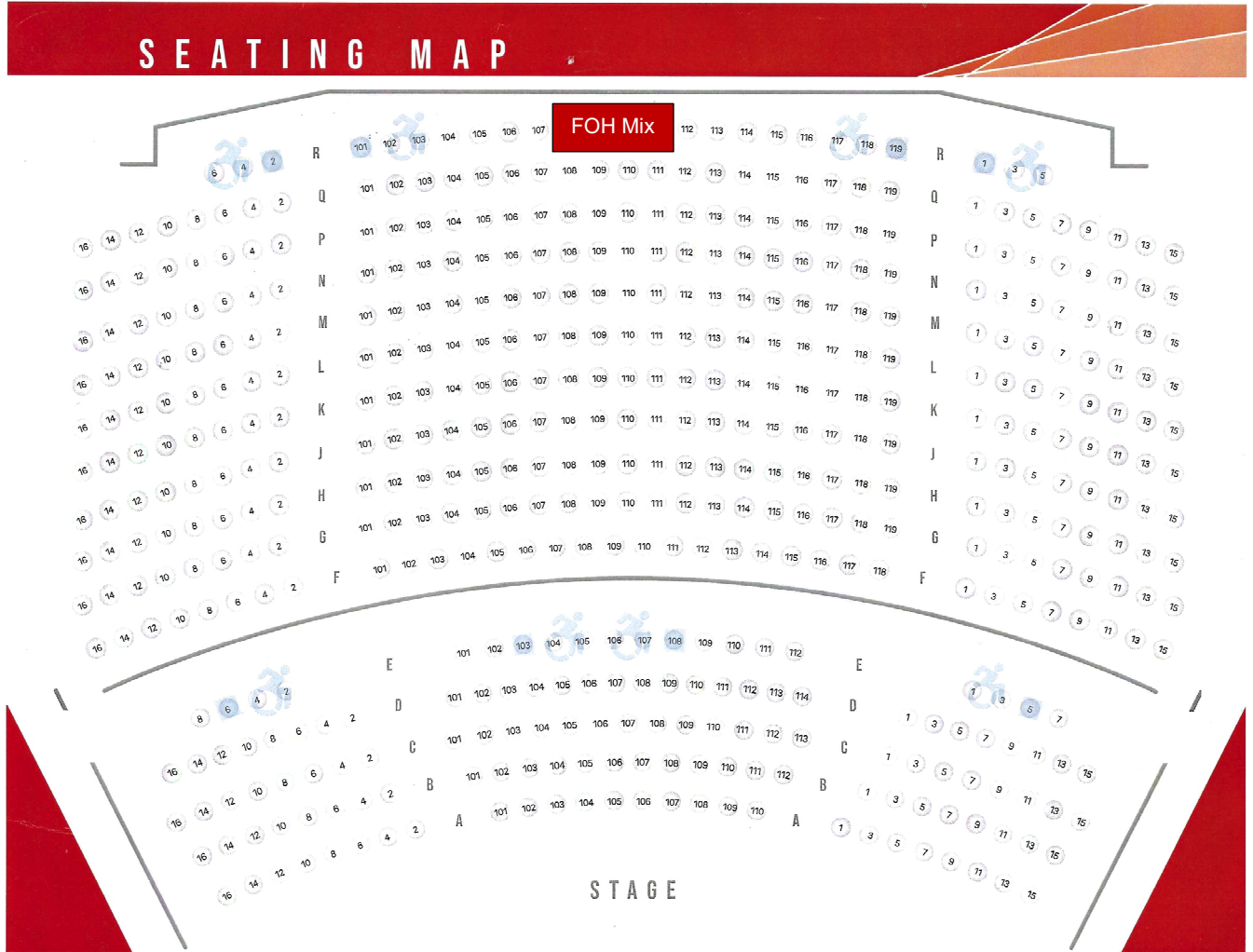


Back Stage Door

Shore Power
50 Amp
NEMA
14-50



Theater Seating Map



Spot Booth

Sound Booth

FOH Mix

Protocols and Restrictions

No item with wet paint may be brought into the facility, and no major painting may be done anywhere inside or outside of the facility. The Theater will allow touch-up painting only on sets, props, and costumes. All painting projects must be scheduled in advance with Theater Production Manager. The Presenter will use care to protect the facility from paint spills and over-spray, and to perform any necessary clean-up.

LVPAC adheres to professional theater industry safety codes. All flown scenery requires the use of hardware rated for that purpose.

To facilitate load-in, scenery should arrive properly rigged. The Theater reserves the right to re-rig any piece deemed unsafe to fly. Only hardware rated for "overhead lifting", domestically made, rated and stamped with all identifying information including working load limits, is to be used.

Any hardware that is damaged, not made domestically, not rated for overhead use or markings are not legible, will not be permitted.

If the Presenter desires to fly people, the Presenter must employ a specialty flying company approved by The Theater (such as Flying by Foy or ZFX).

Glitter, small confetti, and hay is prohibited in the theater. Chewing gum is never allowed. Food and drinks are prohibited on the stage, backstage except bottled water.

A sufficient number of adult chaperones are required for events with children on stage and must be present when children arrive. The Presenter is responsible for the behavior of all cast members backstage.

The Presenter should arrange for all deliveries and pick-ups of equipment to occur during the time contracted for the use of the Theater. Any pick-ups or deliveries scheduled outside of this time must be approved in advance by The Theater. Storage of sets, props, costumes, etc. over any non-contracted days is not allowed unless arranged with Production Manager.

The Presenter should provide a Stage Manager familiar with the production for all rehearsals and performances. The Stage Manager will call the show on headset with the stagehands. Theater personnel will assist and train the Stage Manager if required.

LVPAC Stagehands must be given scheduled breaks in accordance with California Labor Laws.

Fire Code and Safety Compliance

Compliance with all local, state, and federal safety and fire codes is required. All sets and drops must be flame proofed or fire retarded. Management will prohibit the use of any item failing to comply with fire codes and/or safety standards.

The use of all special effect equipment, including, but not limited to, smoke machines, fog machines, hazers, and all types of pyrotechnic equipment, as well as the use of gun powder, starter pistols, candles, cigarettes, spark producing items and all types of flames, **is subject to the advance approval of Management and, in some cases, the Livermore-Pleasanton Fire Department Fire Marshal. Labor fees may be incurred to obtain permit. *Please note that without advance approval, the use of special effects will be denied.***

In accordance with California state law, the entire Theater building is a smoke-free facility.

Covid Policy:

All employees and volunteers are required to follow Alameda County guidelines for large gatherings.

This policy is subject to change at any time and according to Alameda County guidelines.

LVPAC Contacts

Main BOH Contacts:

Director of Operations
Eric Johnson
Office - 925.583.2302
ejohnson@lvpac.org

Hospitality / Hotel Coordinator

Pam Harvey
M:925.997.9830
pharvey@lvpac.org

Executive Director

Chris Carter
925.583.2301
ccarter@lvpac.org

Director of Finance

Reanna Bradford
925.583.2303
rbradford@lvpac.org

Director of Operations

Eric Johnson
925.583.2302
ejohnson@lvpac.org

Director of Marketing

Ruth Eggherman
925-583-2306
regherman@lvpac.org

Marketing Manager

Andrew Kracht
925.583.2306
akracht@lvpac.org

Facilities Manager

Julio Gomez
925.583.2309
jgomez@lvpac.org

Development Manager

Brittany Mulgrew
925.583.2305
bmulgrew@lvpac.org

FOH Manager/Volunteer Coordinator

Carol Edwards
925.583.2300 ext. 110
cedwards@lvpac.org

Box Office Manager

Debra Olson
925.583.2307
dolson@lvpac.org

Visual Arts and Education Manager

Anne Giancola
925.583.2310
agiancola@lvpac.org

BANKHEAD THEATER

2400 First Street
Livermore, CA 94550
Tel: 925.373.6800

Loading Dock:

Located on Railroad Avenue
Address to Loading Dock for GPS
2309 Railroad Avenue
Livermore, CA 94550